



CONVEYOR HEALTH ASSESSMENT SUMMARY

RISK MANAGEMENT



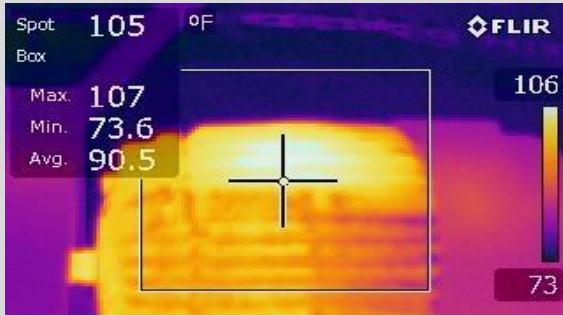
PROTECT

YOUR

INVESTMENT!



- PROBLEM SOLVING SOLUTIONS
- STRAIN GAUGE UTILIZATION ANALYSIS
- CHAIN STRETCH MEASUREMENTS
- ULTRASONIC, INFRARED & VIBRATION ANALYSES
- ITEMIZED CONVEYOR STATUS MATRIX REPORT
- LUBRICATION NEEDS ANALYSIS
- COST-SAVING & LONGEVITY SOLUTIONS
- CHAIN PULL CALCULATIONS
- ASSET REVITALIZATION SOLUTIONS
- UPTIME OPTIMIZATION REPORT
- TRACK WEAR REPORT
- PREVENTIVE MAINTENANCE PLAN
- PRIORITIZED ACTION PLAN



DMW INFRARED ANALYSIS

DMW specializes in the measurement of temperatures using Infrared Thermography. We focus our inspection on critical conveyor drive components and highlight abnormal heat generation that can lead to breakdowns, production time loss and fire safety issues.

ONE CLIENT'S OUTCOME:

DMW Static Inspection:

Identified Track on Verge of Failure & Repair Needs

After DMW Repair:

Plant Avoided Failure that would have Resulted in 1 Shift Downtime Minimum

Approximate Savings:

50 Units per Hour
X 10 Hours
X \$12,000 Profit per Vehicle

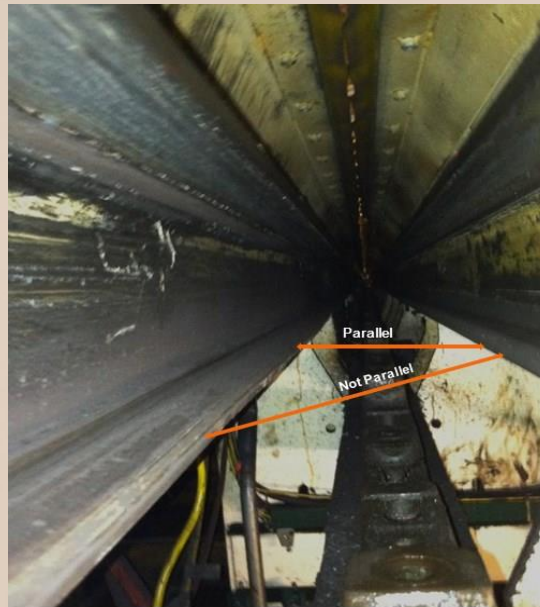
= \$6 Million
SAVINGS

DMW ROOT CAUSE ANALYSIS:

DMW determines all possible obstacles interfering with production throughput ... your bottom line.

Severely Bent Inverted Track Flange

DMW



Discovered:

- 1- Severely bent inverted flange causing an uneven flow of carrier weight distribution.
- 2- Lack of yoke support due to end-user adjustment.

GLOBAL PORTFOLIO

20334 Superior Road
Taylor, Michigan 48180

LCI@DMWCC.com

734.288.4400

t t:

Life Cycle Improvement

www.DMWCC.com